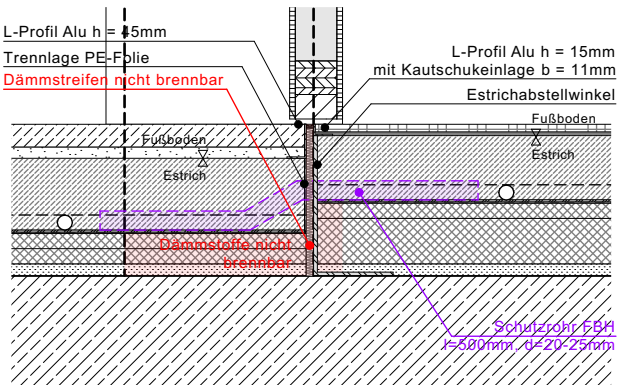


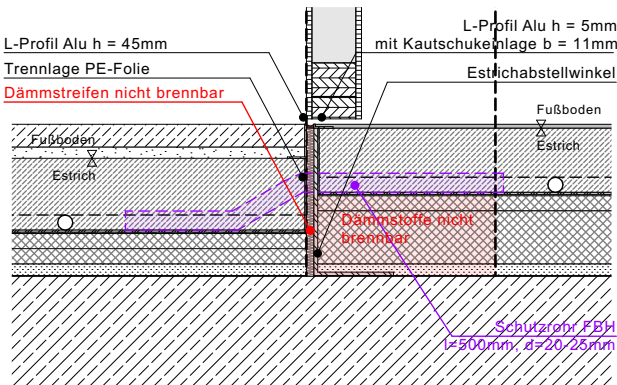
**BO 23 / BO 22**  
Fugendetail  
Betonwerkstein Magistrale - Fliesen Sanitär  
EG / BT A + B



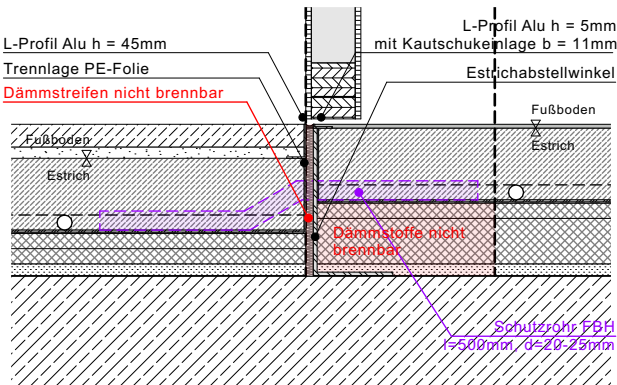
Magistrale EG



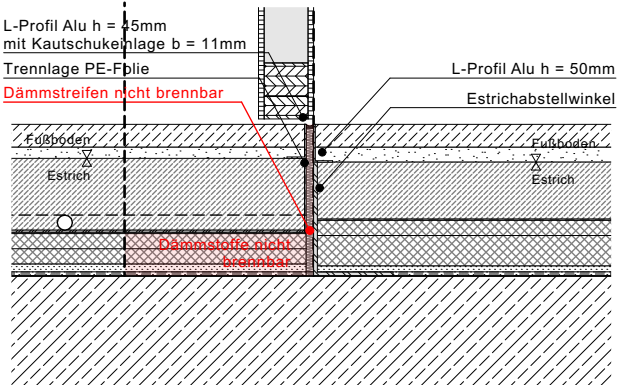
**BO 23 / BO 21**  
Fugendetail  
Betonwerkstein Magistrale - Linoleum Flure  
EG / BT A + B



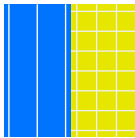
**BO 23 / BO 20**  
Fugendetail  
Betonwerkstein Magistrale - Linoleum Aula/ Mensa  
EG / BT A + B



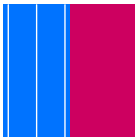
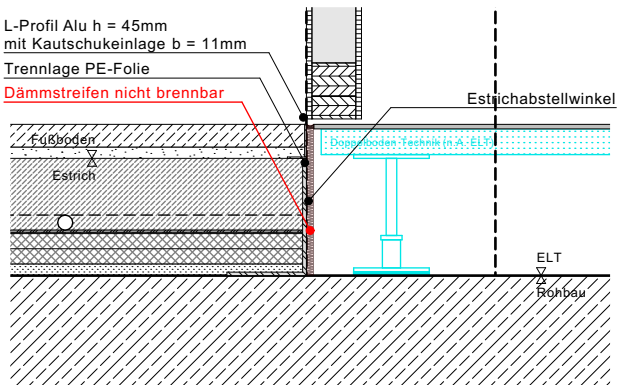
**BO 23 / BO 31**  
Fugendetail  
Betonwerkstein Magistrale - Betonwerkstein TRH  
EG / BT A + B



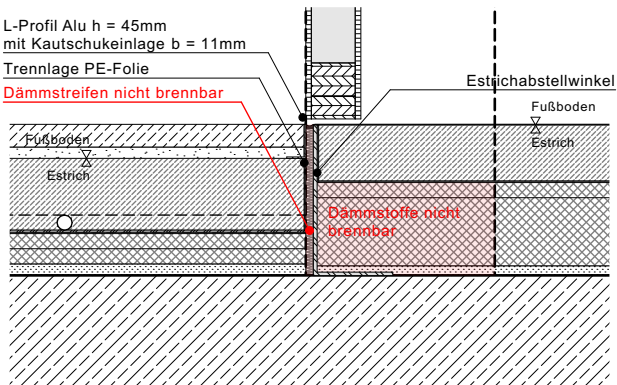
Magistrale EG



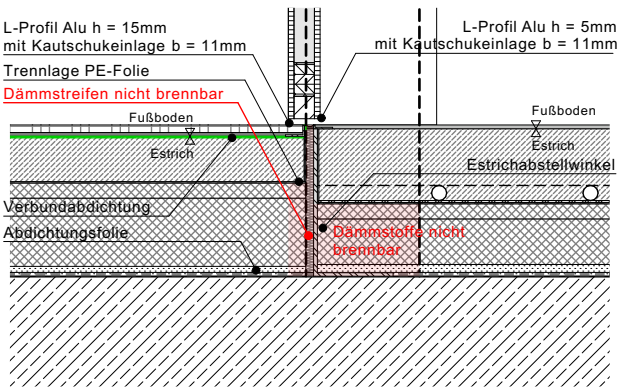
**BO 23 / BO 27**  
Fugendetail  
Betonwerkstein Magistrale - Doppelboden Technik  
EG / BT A + B



**BO 23 / BO 26**  
Fugendetail  
Betonwerkstein Magistrale - Technik Estrich  
EG / BT A + B



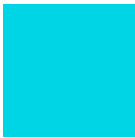
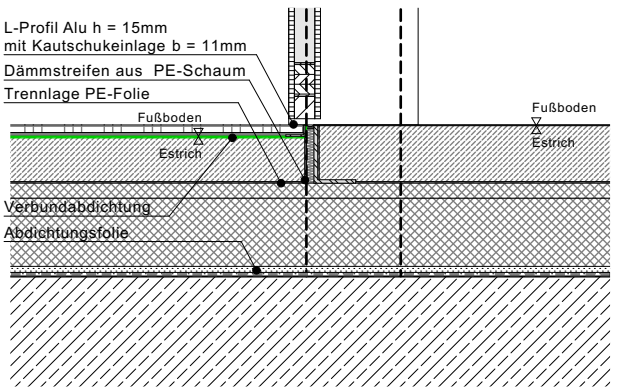
**BO 15 / BO 13**  
Fugendetail  
Fliesen Küche - Linoleum Mensa  
EG / BT A



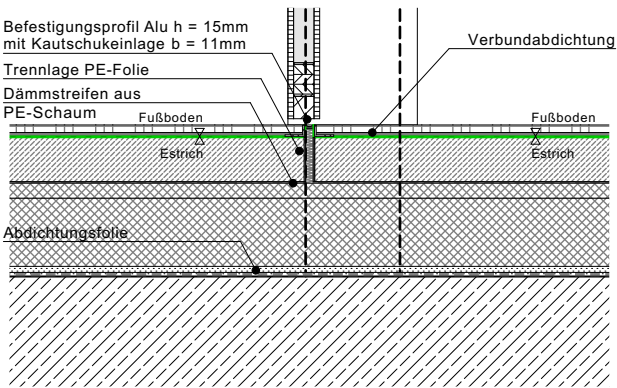
Küche



**BO 15 / BO 26**  
Fugendetail  
Fliesen Küche - Technik Estrich  
EG / BT A



**BO 15 / BO 15**  
Fugendetail  
Fliesen Küche - Fliesen Küche  
EG / BT A



Anmerkungen

Alle Bauteilaufbauten sind nur im Zusammenhang mit den Übersichtsplänen gültig!

Index Historie

Index	Datum	Änderungsvermerk	gez.

1903 II Neubau Michael- Ende-Schule  
OK FFB EG  $\approx \pm 0,00 = 475,850\text{m üNN}$

AR6X\_DEBO\_1561\_

Bodenfugen EG  
Format : M 1:10 05.02.2026